

# WIRELESS SOLAR INTELLIGENT TRAFFIC LIGHT CONTROLLER



GPRS



WIFI



Handset



GPS  
Communion



Central control



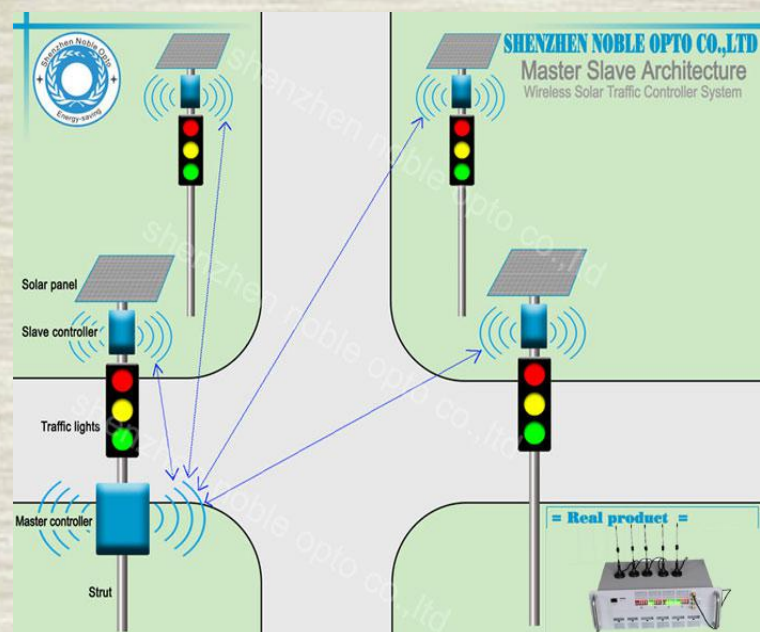
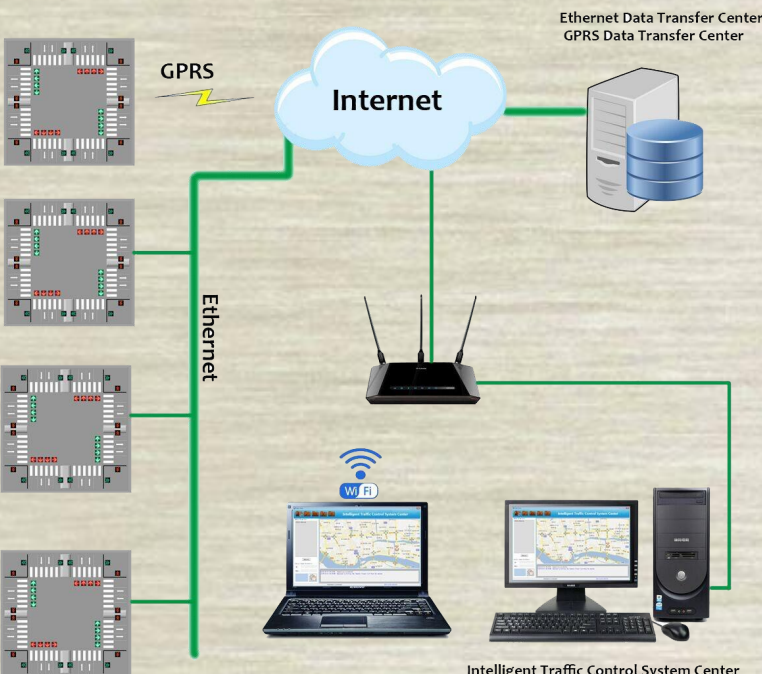
LAN



WAN

## Basic Characteristics :

- ❖ Adapts 32 digits ARM CPU.
- ❖ 1 master and 4 slave controller work together by wireless.
- ❖ 1%-100% energy saving adjustment, automatic brightness control(time, voltage)
- ❖ Green wave function can work .
- ❖ WIFI for handset to remote control the controller..
- ❖ Wireless parameter setting and data synchronization by GPRS module.
- ❖ LAN,WLAN on TCP/IP.
- ❖ GPS Real-time clock for wireless sync available
- ❖ Wireless traffic management by the remote controller and handset.
- ❖ Technique of PWM to control the brightness of the light
- ❖ 36 channel relay input at most for vehicle loop detect function
- ❖ 8 channel at most, the detecting function of wireless pedestrian button.
- ❖ Hardware flashing function
- ❖ Green conflict setting and detection function
- ❖ Remote control setting on the software.
- ❖ Fault diagnose function for open or close.
- ❖ Fuse protected driver output PSU with LED indicators
- ❖ Traffic Manual can work for you.



### Modes Features:

- 1.Support cycle fixed mode
- 2.Support 2 kinds of Pedestrian across street mode
3. Support 2 kinds of Vehicle Loop Detector mode
  - A. Fuzzy induction mode
  - B. Full induction mode

### Signal & Phase:

- Max 240 plan setting
- 20 time periods setting for per plan
- Max 200 menu setting
- Special Holiday plan
- Week Plans
- Traditional display mode( red & yellow lighting together ) and standard display mode (red & yellow light lighting separately )
- Yellow Light Flashing & lighting , pedestrian light lighting and flashing

### Parameter:

| Green flash time | Green Flash Frequency | Yellow Flash Frequency | Power Voltage        | Current | Clock Precision | With PFC+PWM | Power Consumption |       | Loaded Power    | Ambient RH                        | Working Environment |
|------------------|-----------------------|------------------------|----------------------|---------|-----------------|--------------|-------------------|-------|-----------------|-----------------------------------|---------------------|
|                  |                       |                        |                      |         |                 |              | Master            | Slave |                 |                                   |                     |
| 0~59S            | 0.5(Hz)               | 0.5(Hz)                | 12-24VDC / 85-265VAC | 5A      | 0.1S            | >0.8         | 3.6W              | 3W    | ≤1,100V /output | 95%,Non-condensing at 40 degree C | 0 to 55 degree C    |

### Kindly notice:

#### 1. Pedestrian push button:

When you have this function, please set the pedestrian green time 25 seconds at least;

#### 2. Vehicle detector:

Under this mode each direction of Loop detector 1(for example NL1) or loop detector 2(for example NL2) will be triggered effectively.



# Shenzhen Noble Opto Co.,Ltd

Mingjinhai Industry Park Tangtou Road, shiyan Town Bao'an District Shenzhen, Guangdong Province China.  
 Web:www.nobleled.com TEL:(86)755-27651483618 FAX:(86)755-2765 1483 Email:mary@nobleled.com