



LED Solar Traffic Warning Light

Introduction:

- ◆ Cover of our Solar flash warning light can be cobweb or clear lens
- ◆ Wider viewing angle
- ◆ Flashing times in a minute can be optional
- ◆ Utilizes constant current source to maintain consistent light output
- ◆ Engineered for superior thermal management.
- ◆ Environmentally friendly & energy saving
- ◆ Meets and/or exceeds CE&ROHS standards
- ◆ Maintains 70% of the initial luminance intensity after 100,000 hours of operation
- ◆ Excellent moisture and dust resistance.
- ◆ The shape of our Solar traffic warning light can be full ball ,or arrow etc.
- ◆ All our solar flash warning light have 2 years warranty

Applications:

Widely use in manufacturing facilities, for pedestrian safety, stop and yield signs, vehicle directions, emergency instructions, parking safety, school zone safety and important intersection for warning.

Features:

- Modern and popular design
- High efficiency, high brightness, wide view angle
- 90% energy saving than traditional light
- Long life span: $\geq 70,000$ hours
- Multi-ply sealed water resistant
- Light intensity automatically adjustable
- Exclusive optical lens, good color and enhanced uniformity
- Up to national standard GB-14887-2003

Image:

200mm/8 inch



300mm/12 inch



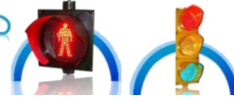


Specification:

A Whole Set Traffic Warning Light:		
Model	NBSFL-200	NBSFL-300
Size	200mm	300mm
LEDs	61 / 90	121 / 168
Power	<3W	<8W
Lens	Cobweb Lens / Clear Lens	
Colors	Yellow / Amber / Red / Green / Blue / White	
Material	PC	
IP rate	IP65	
Brightness	>4000cd/m ²	
Working voltage	12V	
Wavelength	Red (625±5 nm), Amber (590±5 nm), Green (502±2 nm)	
Operation temperature	-15 ~ +65	
Operating temperature	-15 ~ +40	
Flicker Frequency	1HZ	
Duty Factor	1:3	
Continuous of Rain Working Day	7 days	
Working Current	>350ma	
Visual Range	500 m	
Assemble Way	Suspension	
Solar Panel:		
Power	10W	
Summit Current	0.47A	
Place of Production	Shenzhen	
Operating Life	15 years	
Solar Battery:		
Capacity	6.6AH/12V	
Operating Life	More than 3 years	

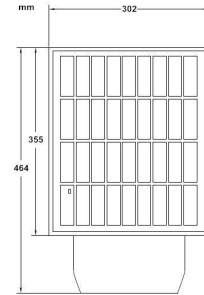
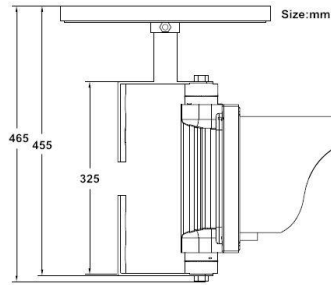
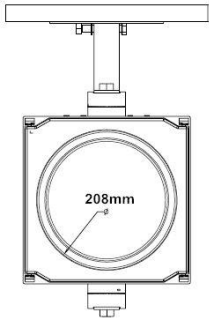
Package:

Model	Carton size(mm)	QTY(pcs)	G.W.(KG)	N.W.(KG)	Wrapper	Volume(m ³)
NBSFL200	350*380*430	1	8.20	7.43	K=K carton	0.058
NBSFL300	510*430*310	1	16.50	15.49	K=K carton	0.068

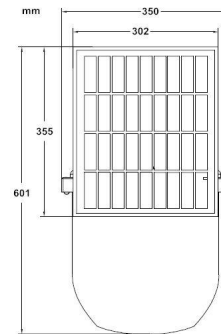
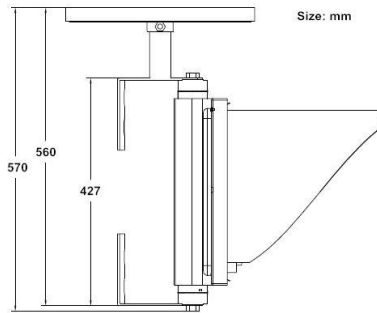
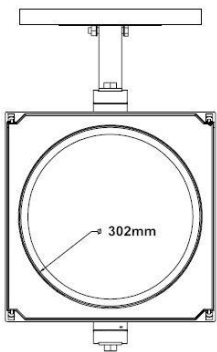


Size:

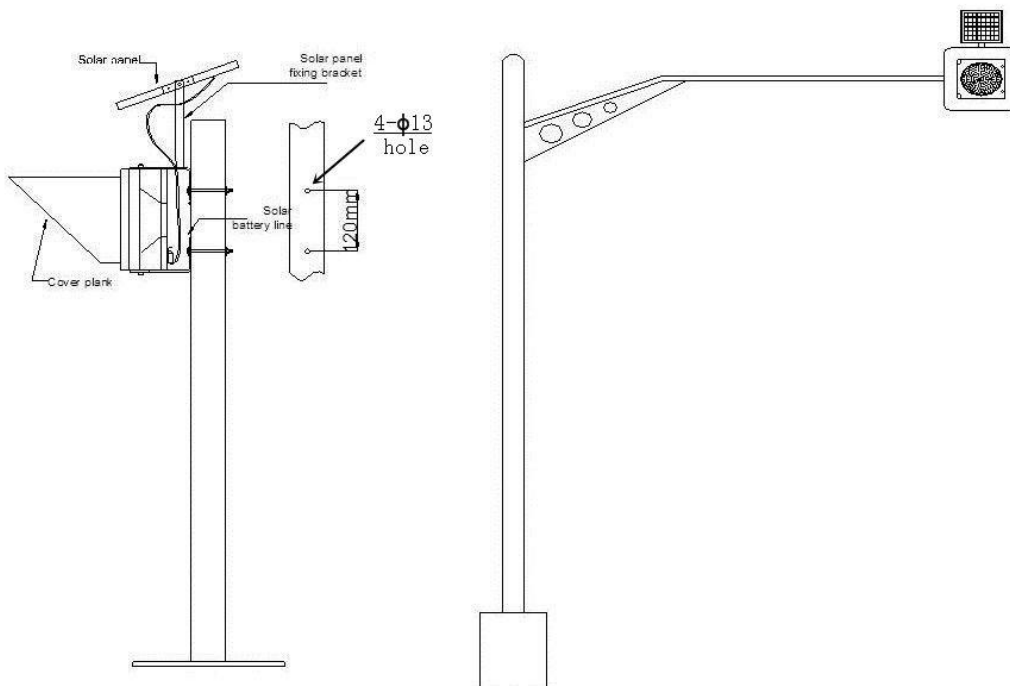
200mm(8")



300mm(12")



Installation:





Application:

